

UNE standards

The products have been tested in accordance with the procedures described in the building hardware standards:

» **UNE-EN 13126-1: 2012**

Building hardware. Hardware for windows and door height windows. Requirements and test methods.

» **UNE-EN 13126-3: 2012**

Hardware for windows and door-height windows. Requirements and test methods.

» **UNE-EN 1670:2007 / AC: 2008**

Corrosion resistance. Requirements and test methods.

The standard has been developed by the **Technical Committee for Standardisation CTN 85: Closure of frames in building and related products**. Tech. secretary: ASEFAVE, Asociación Española de Fabricantes de Fachadas Ligeras y Ventanas.



Hardware classification

The values indicated here have been obtained in the **STAC Testing lab** in compliance with the procedure described in the UNE-EN 13126-3: 2012 standard.

DIGIT	1	2	3	4	5	6	7	8	9
GRADE	-	4 # 90	-	0	-	4	0	3 # C1	-

digit 1	Use category	Grade 1: according to the main test parameters.
digit 2	Durability	Grade 4 # 90: 15.000 side-hung opening cycles (0, +150).
digit 3	Mass test	No requirements.
digit 4	Fire resistance	Grade 0: no requirements.
digit 5	Safety of use	Grade 1: the hardware complies with the criteria for the safety of persons when in use.
digit 6	Corrosion resistance	Grade 4: very high corrosion resistance, 240 hours in saline mist chamber.
digit 7	Security	Grade 0: no security.
digit 8	Applicable part	Grade 3 # C1: window handles with hook.
digit 9	Test dimensions	No requirements.



References

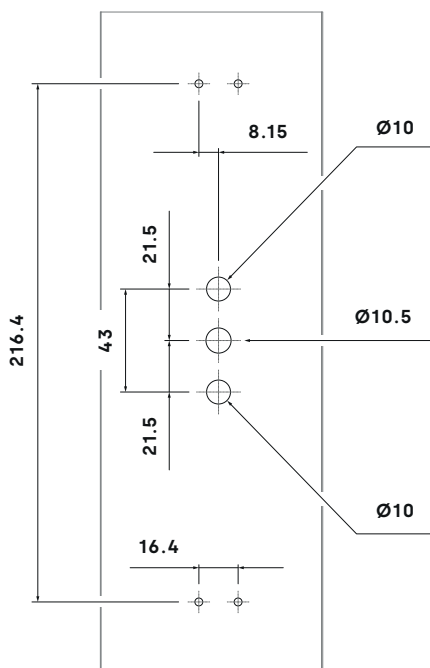
References	Description
034800 **	TITÁN FLAP R pull handle with cam for right-hand opening
034900 **	TITÁN FLAP L pull handle with cam for left-hand opening

**	00 Plain finish or unfinished
	91 Special lacquer finish 1

**	01 White lacquered finish
	92 Special lacquer finish 2

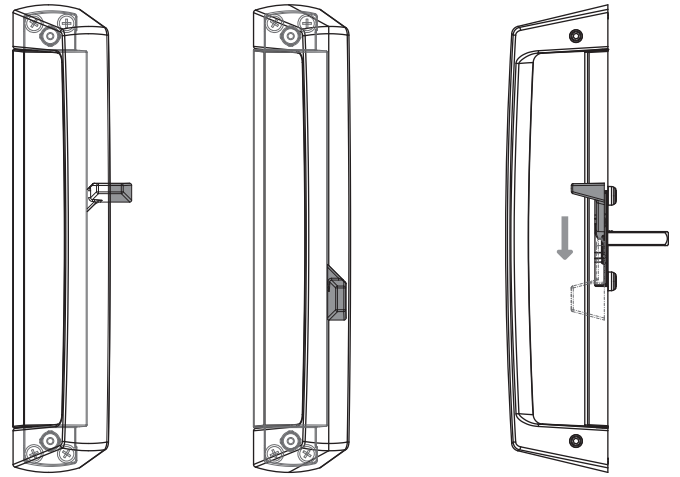
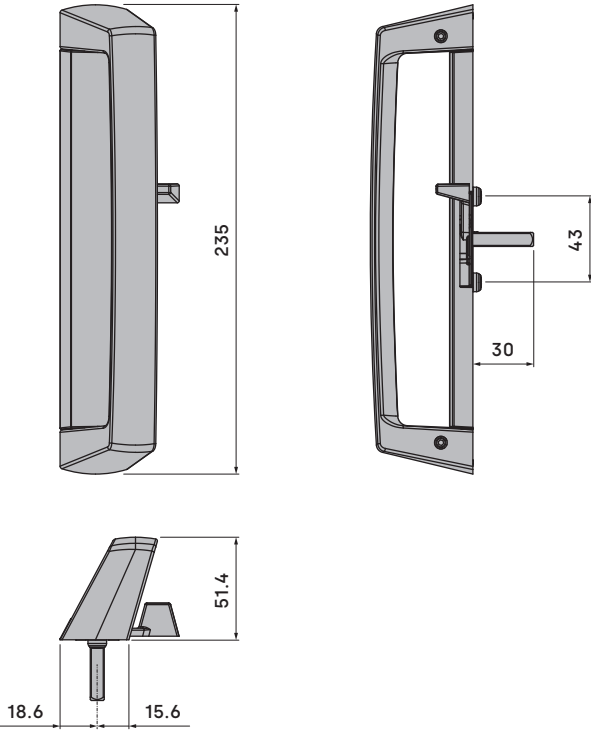
**	02 Black lacquered finish
	93 Special lacquer finish 3

Profile machining



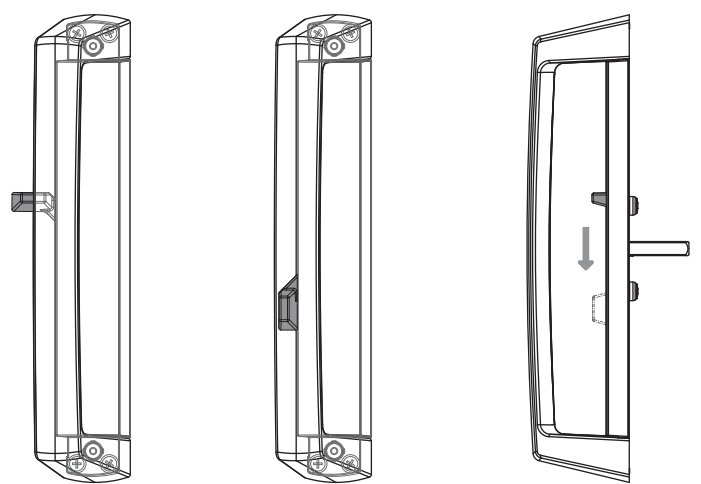
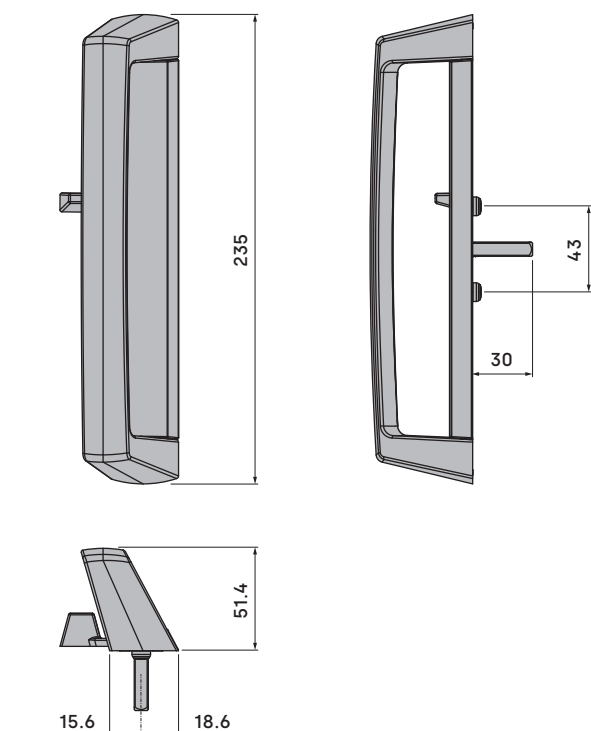
Overall dimensions

034800 **




OPENING POSITION **LOCKING POSITION**

034900 **




OPENING POSITION **LOCKING POSITION**